

# Restoration of your brighter smile

Natural beauty  
with the cutting-edge technology  
by Altimed

 **ALTIMED**

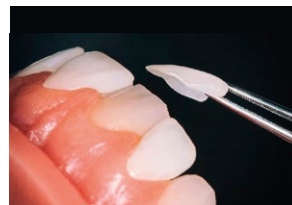


# All-ceramic restorations

Aesthetic smile opens up new opportunities, because the first impression is inimitable. We recreate the natural beauty of teeth, helping to communicate easily and freely.

Time-damaged teeth can be quickly restored using our **aesthetic ceramic and metal elements**, i.e.: single crowns and caps, bridges, durable veneers and finest lumineers, anatomical inlays, individual abutments and support structures.

A widest range of materials used allows you to **choose the colour and shape** of your teeth for the most natural and peculiar smile according to your expectations and anatomical features.



*Implants*



*Abutments*



Based on the clinical situation and price preferences, the optimal solution for dental reconstruction is selected.

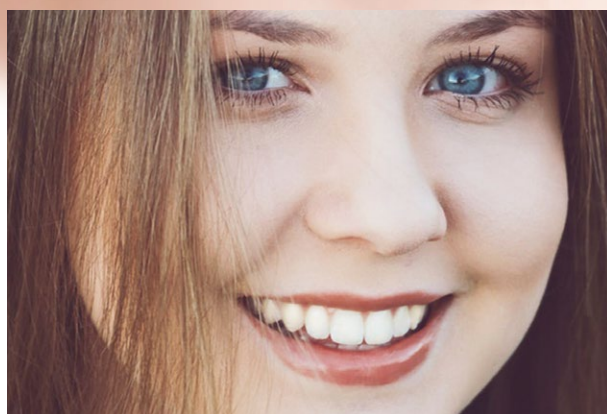
Artificial and natural teeth can hardly be distinguished. When using **lumineers** - translucent ceramic linings of 0.2 mm thick only, while featuring high strength and anatomical aesthetics - their appearance meets the expectations of even most demanding customers.

#### Simple solutions

- reconstruction and replacement of teeth
- aesthetic smile restoration
- dental elements ranging from budgetary to top-class models
- durability and reliability

#### Natural look

- customised shaping of teeth, based on 3D scan pattern
- wide range of colours with gradients - high-precision industrial production.



*Lumineers*

*Veneers*

*Crowns*



# Solutions



## Implant-based solutions



Complete tooth replacement applies an implant, which is screwed into the bone tissue and becomes a reliable support for the dental element.



Crown positioning takes effect with a conventional or tailored abutment.



It is possible to use either a single crown or prosthetic bridges with several crowns combined with support for several implants. This solution makes the structure stronger, reduces the load when chewing, thus extending the service life of the implant and restoration components.



## Partial reconstructions

Partial wear of the teeth allows for ceramic and metal crowns to be integrated, by using the original teeth for the basis. This solution is one of the most popular, avoiding the implantation process and saving a part of the natural tooth.

Artificial crowns are made of durable materials with long service life and virtually not subject to wear.

Partial restorations are performed using ceramic inlays, onlays and full anatomical crowns, tailored by use of 3D scan.

*Special area  
for soft tissue ingrowth*

*TFine thread for implant fixation  
in solid cortical bone*

*Thread for fixation  
in spongy bone*





# 3D scan

## Creative approach to modeling



Three-dimensional digital scanning to replace plaster casts, high precision of industrial production using CAD/CAM systems instead of manual fitting.

3D dental digital technology make it possible to build an accurate computer model of the patient's mouth, and then to design and fabricate the desired configuration of crowns, implants, inlays, onlays and abutments.

No need for molds and manual fitting by a dental technician.

The modeling phase implies the analysis of the teeth chewing surfaces, determination of the colour of the interdental areas, elimination of increased load points, and bite optimisation for a perfect fit.

A new tooth pattern can be easily transmitted from any country worldwide for manufacturing on high-precision industrial equipment.

Unlike laboratory conditions, computer modeling provides for assessment of the entire jaw performance and impact of teeth on each other.



3shape 

# Crowns

Global top manufacturers of materials  
for dental restorations

H.C.Starck



ivoclar  
vivadent

VITA

## Metal-based crowns and bridges

Budgetary option based on cobalt-chromium-molybdenum and titanium alloys, for strong and durable performance.



## Ceramic crowns and bridges

High-strength zirconium ceramics with a precise selection of colours. Superb wear resistance, better biocompatibility and excellent aesthetic properties, as compared to metal elements.



## Screw-retained crowns and bridges

Modern cementless quick-detachable design options for reliable and convenient fixation.



## Titanium abutments

Conventional and tailored abutments for cement fixation provide for precise positioning of crowns, taking into account individual characteristics and wishes.



## Ceramic abutments

Conventional and tailored zirconium abutments, combining the strength and aesthetics of restoration through the use of uniform materials for the base and crown.



## Ceramic inlays

Partial tooth replacement with a durable and aesthetic ceramic component allows to maintain the aesthetics of your natural tooth.



## Denture supporting structures

Complete denture replacement with uniform load distribution over the dental arch and reliable prosthesis fixation with clamps.



# Lumineers & veneers

Excellent appearance of your teeth  
makes a bright smile contribution to your image

## **Veneers – min. 0.6 mm thick**

Attractive and durable ceramic onlays that help visually improve the smile area and hide aesthetic defects.

Veneers are permanently attached to the prepared front teeth.

## **Lumineers – min. 0.2 mm thick**

Due to their extra fine design, lumineers provide a feeling of comfort comparable to native teeth, while creating an excellent natural appearance.

They are made by use of high-tech equipment from advanced composite and glass-ceramic materials.

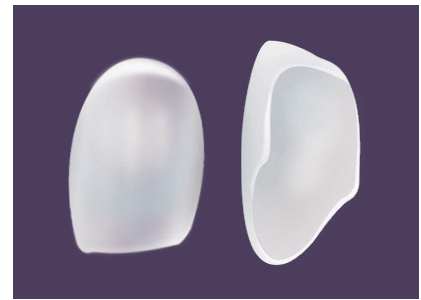
Lumineers can be integrated without preparation of teeth.



*Veneers*



*Lumineer fixing*



*Lumineers*

### **Whiteness of teeth**

Veneers and lumineers make it possible to achieve the desired whiteness of teeth and protect them from browning caused by coffee and tea, cigarettes and other products.

### **Protective function**

Durable and wear-resistant ceramic lining reliably replaces worn tooth enamel, preventing the aggressive effect of food products on teeth.

### **Solving aesthetic problems**

Ceramic onlays cover damaged areas of front teeth, ensuring the superb smile appearance.



**Manufacturer: Altimed JSC**

ul. Dimitrova, Bldg. 5, Suite 12, Minsk

+375 17 348-8254

[altimed.by](mailto:altimed.by)   [minsk@altimed.by](mailto:minsk@altimed.by)

Quality Management System  
ISO 13485 Certified

